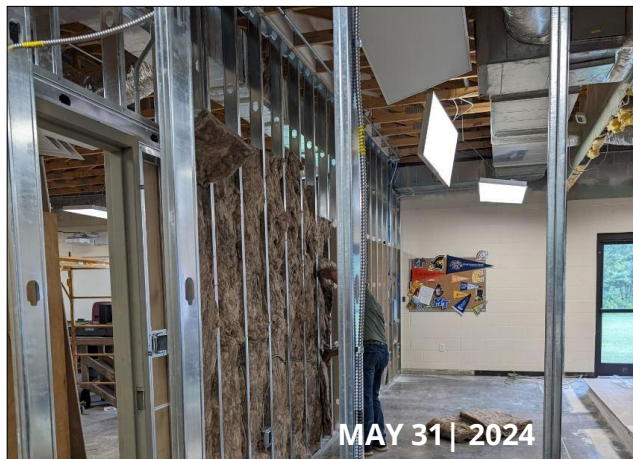


PHASE 1 |



PHASE 2 |

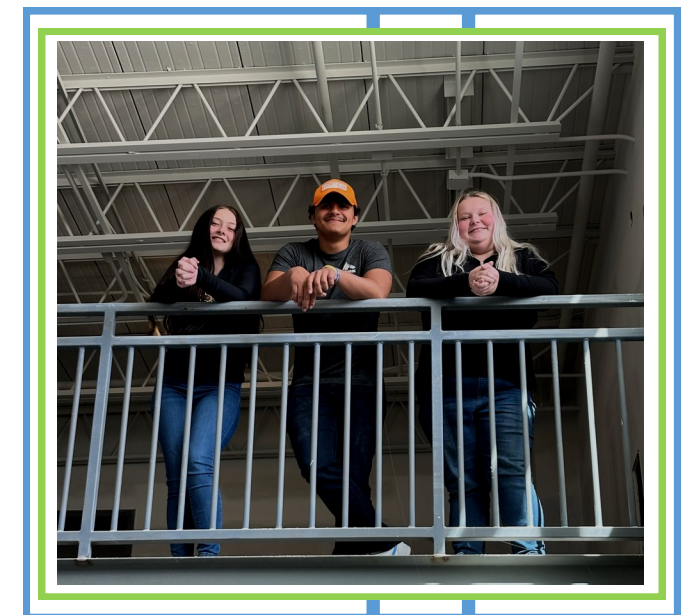


PHASE 3 |



BETHEL CHRISTIAN ACADEMY

Same Ministry | Same Mission | Greater Impact



Bethel Bible Village | Mission Statement
To provide Christ-centered homes and education for children,
equipping them to fulfill God's plan for their lives.

Bethel Christian Academy | Mission Statement
Provide a supportive, safe, and welcoming environment to teach and encourage the
whole student. We foster spiritual, physical, intellectual, relational, and emotional
growth while promoting post-secondary education and vocational success.

BCA Overview

- Fully accredited secondary education with all core subjects
- Small class size with individualized learning plans
- Dynamic faculty highly trained in differentiated instruction
- Intentional structure to promote community and emotional restoration

Impact

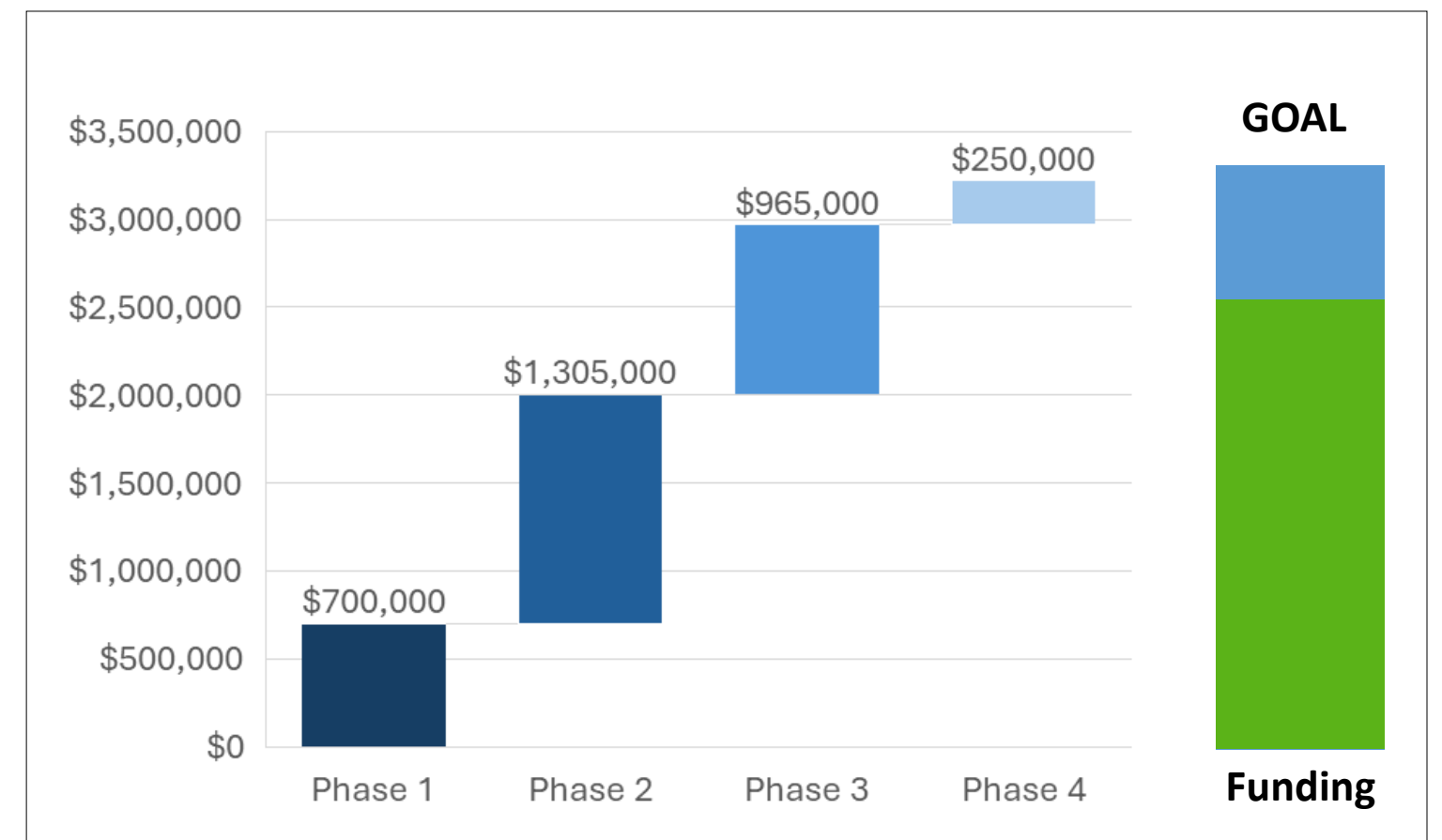
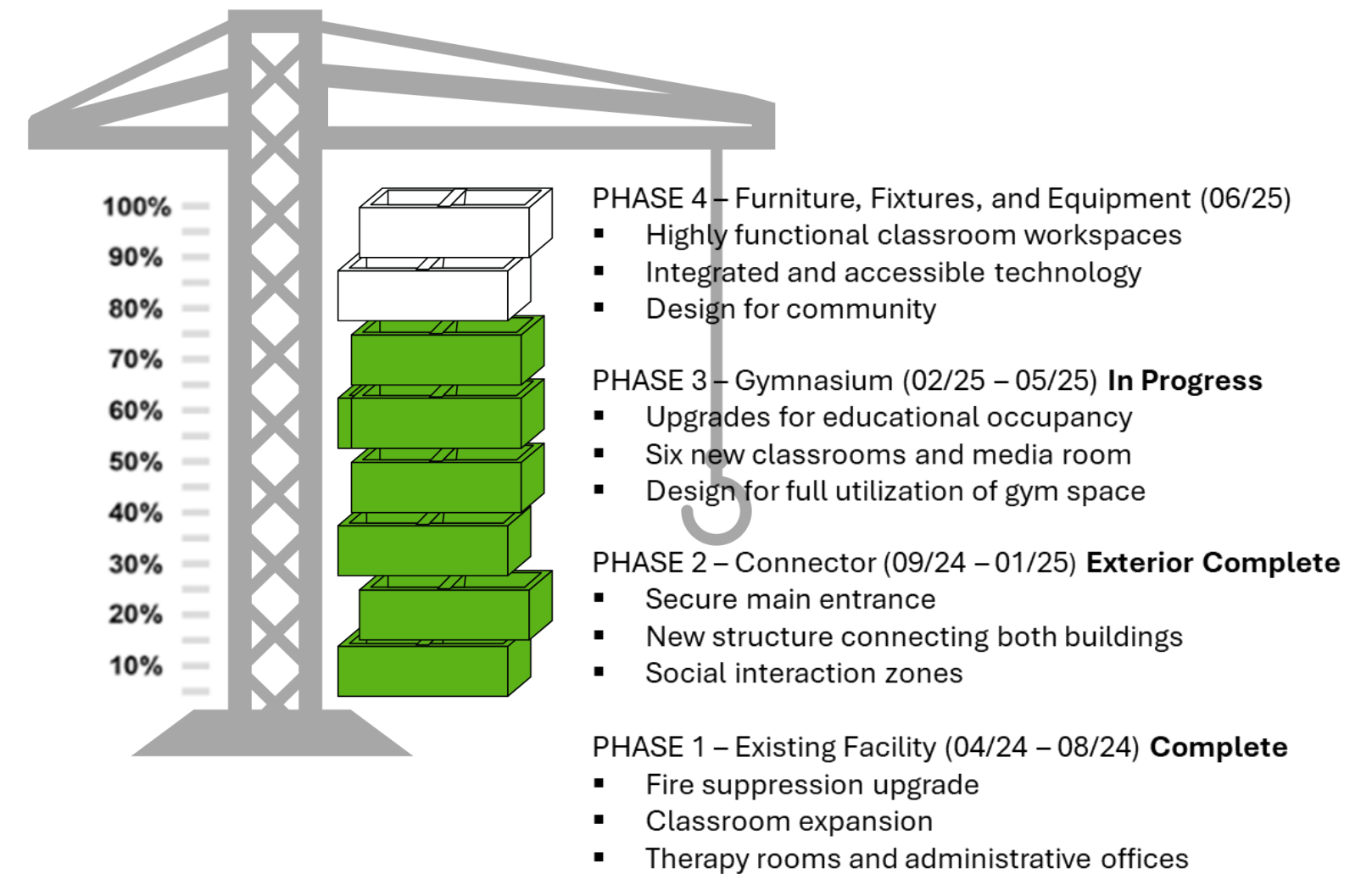
- Spiritual growth through personal relationship with God
- Increased physical conditioning and healthy lifestyle choices
- Improved intellectual capacity and post secondary preparedness
- Relational and emotional stability stemming from therapeutic services

Need for Project

- Upgrade all BCA facilities to meet educational codes
- Spatial restrictions limiting students served – currently at 90% capacity
- Fully utilize all facilities for instructional purposes
- Both main buildings separated with exterior entrance

Vision

- All educational facilities interconnected with improved security
- Maximize use of existing buildings and expand educational programs
- Triple capacity to serve more than 100 students, including residential and day
- Enhanced community and therapy space



CAMPAIGN PROMISE | MALACHI 3:10

"Test me in this," says the Lord Almighty, "and see if I will not throw open the floodgates of heaven and pour out so much blessing that there will not be room enough to store it."

